

Department of Zoology  
Hungarian Natural History Museum  
Budapest, Hungary

TAMÁS VÁSÁRHELYI

*Aradus chinensis* spec. nov.

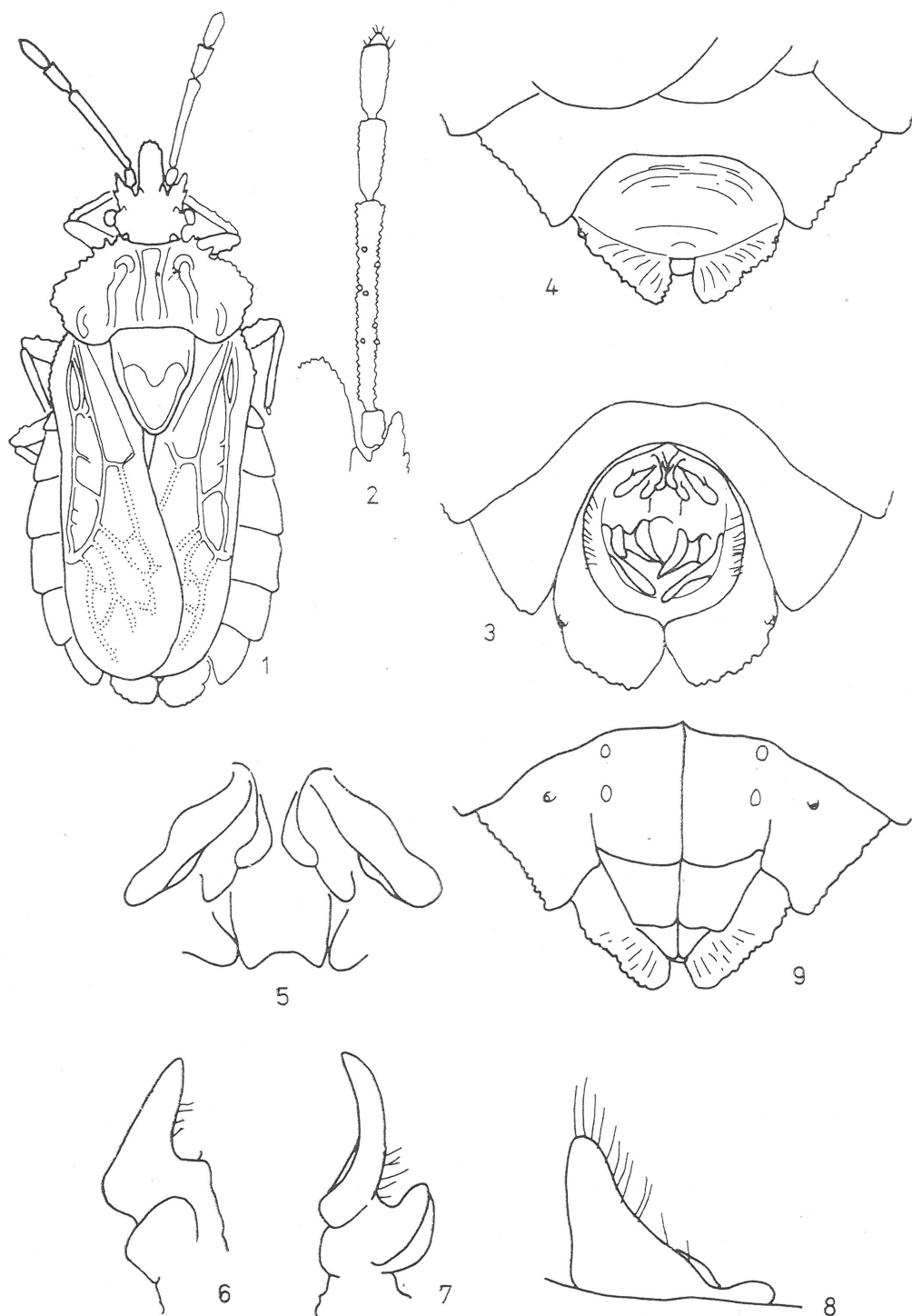
With 9 text figures

Data of a small unidentified palearctic *Aradus* material, deposited in the Department of Taxonomy of Insects in the Eberswalde branch of the Institute of Plant Protection Research (former Deutsches Entomologisches Institut) are published here, including the description of a new species from China. The type species contains 22 specimens, all somewhat pale and several specimens with obvious signs of damage due to museum beetles. In the measurements the average of 13 males and 6 females and the extreme values (in parenthesis) are given. The drawings were made with the help of a drawing apparatus.

*Aradus chinensis* spec. nov.

Belongs to the betulae-group (Fig. 1). Head about 1.1 times as long as wide. Antenniferous tubercles long, pointed, with yellow tip and laterally with a long tooth. Ante- and postocular tubercles distinct, former with yellow, pointed tip. Eyes protruding. Antenna long (Fig. 2), relative length of antennal joints in per cent of total length (antennal formula) as 9:49:19:23 in male and 9:48:20:23 in female. Joint 2 2.14 (male) or 2.24 (female) times as long as the width of head. Joint 1 brown, 2 brown, apically darker, with some whitish teeth (as well as the legs), gradually thickening towards apex, 3 yellow only about basal  $\frac{1}{5}$  brown, 4 blackish brown. Rostrum reaching or slightly surpassing hind border of prosternum.

Pronotum about 2.4 (male) or 2.6 (female) times as wide as long. Antero- and posterolateral margin serrate, anteriorly with 2—3 long teeth on both sides. Fore disc moderately elevated, not higher than hind disc, anterior end of midlateral carina elevated, dark brown. Scutellum 1.35 times as long as wide, lateral margins basally parallel or subparallel, tip rounded. Disc with yellowish granules on and behind median tubercle; granules and median elevation not forming a longitudinal ridge. Wings reaching hind margin of genital chamber (male) or about hind margin of segment 7 (female). Basal dilation moderately wide, rounded, bent dorsolaterally. Hemelytra with lighter and darker markings and with a white spot behind tip of scutellum. Dorsolaterotergites with brown, orange and yellow markings, posterolateral edge yellow. Segment 8 of male as in Fig. 3, tergite 9 (Fig. 5), paramere (Figs. 6—7) and parandrium (Fig. 8) similar to those of related species. Lateral lobe of tergite 9 with almost straight inner margin, the more strongly sclerotized part widening in the middle (visible in posterodorsal view, see Fig. 5). Tip of abdomen of female as in



Figs. 1—4. *Aradus chinensis* spec. nov. 1=holotype male; 2=antenna; 3=male external genitalia; 4=tip of abdomen of female

Figs. 5—9. *Aradus chinensis* spec. nov. 5, 6, 7=paramere in two different views; 8=parandrium; 9=tip of abdomen of female, ventral view

Figs. 4 and 9. Pattern of abdominal apodemal impressions 1(2):2:1, the lateral apodeme long, with two distinct centres.

Measurements in mm. Male: total length of body 6.81 (5.74—7.28), length of head 1.24 (1.10—1.36), width of head 1.14 (1.11—1.19), length of pronotum 0.94 (0.72—1.02), width of pronotum 2.41 (2.04—2.64), length of scutellum 1.26 (1.02—1.40), width of scutellum 0.94 (0.72—1.06), width of abdomen 3.05 (2.38—3.28), length of antenna 1.98 (1.84—2.30)

Female: total length of body 8.03 (7.70—8.56), length of head 1.40 (1.32—1.49), width of head 1.24 (1.19—1.27), length of pronotum 1.09 (1.02—1.15), width of pronotum 2.77 (2.60—3.02), length of scutellum 1.52 (1.45—1.62), width of scutellum 1.13 (1.02—1.23), width of abdomen 3.80 (3.45—4.04), length of antenna 2.35 (2.27—2.46)

Holotype (male), allotype (female) and paratypes (15 males, 5 females): "Tientsin, HOFFMANN" "22. V." deposited in the Department of Taxonomy of Insects in Eberswalde and in the Zoological Department of the Museum in Budapest.

The species, within the *betulae*-group, is more closely related to *Aradus hieroglyphicus* SAHLBERG, 1878 but it is longer; it has darker coloration; longer antenna especially joint 2, latter less thickening towards apex; somewhat longer pronotum; tergite 9 with a different median lobe, lateral lobe medially without widening margin; shorter parandrium; etc.

#### Further material

*Aradus conspicuus* HERRICH-SCHAEFFER, 1835 — N. Hütt (coll. BREDDIN)

*Aradus orientalis* BERGROTH, 1885 — Sapporo (coll. BREDDIN)

*Aradus pallescens* HERRICH-SCHAEFFER, 1839 — München, Grünwald, 14. 7. 23. UHMANN

*Aradus spinicollis* JAKOVLEV, 1880 — Tsushima, coll. ROST

Acknowledgements: I am much indebted to Dr. R. GAEDIKE and Dr. G. PETERSEN for providing me the material.

#### Summary

The data of a small palearctic *Aradus* material deposited in the Department of Taxonomy of Insects in the Eberswalde branch of the Institute of Plant Protection Research (former Deutsches Entomologisches Institut) are published here. Besides the data of 4 species, *Aradus chinensis* sp. n. is described. The new species belongs to the *betulae*-group and is more closely related to *Aradus hieroglyphicus* SAHLBERG.

#### Zusammenfassung

Der Artikel enthält Angaben über das wenige Material an paläarktischen *Aradus*, das in der Abteilung Taxonomie der Insekten des Instituts für Pflanzenschutzforschung, Eberswalde (früher Deutsches Entomologisches Institut) aufbewahrt wird. Außer vier bekannten Arten wird *Aradus chinensis* sp. n. beschrieben. Die neue Art gehört zur Gruppe *betulae* und ist näher verwandt mit *Aradus hieroglyphicus* SAHLBERG, 1878.

#### Резюме

В статье приведены данные о палеарктическом роде *Aradus* на основе того незначительного материала, который хранится в коллекции отдела таксономии насекомых при Научно-исследовательском институте защиты растений в Эберсвальдском филиале (бывший Немецкий Энтомологический Институт). Кроме 4 известных вида описан вид *Aradus chinensis* sp. n. Новый вид относится к группе *betulae* и по родству ближе к *Aradus hieroglyphicus* SAHLBERG, 1878.